

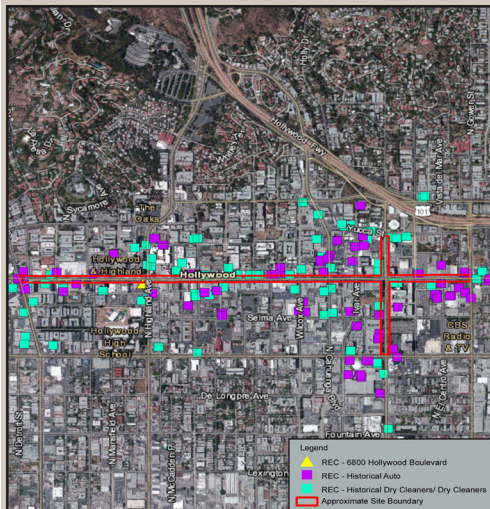


Region 9
Pacific Southwest

BROWNFIELDS TECHNICAL ASSISTANCE

Hollywood Walk of Fame, Los Angeles, CA

July 2021



PROJECT SUMMARY

Community

Hollywood Boulevard has hosted the Hollywood Walk of Fame since the 1960s. The area is a popular tourist destination used for pedestrian activity, street vending and performances. In 1978, the Cultural Heritage Board of Los Angeles designated the Hollywood Walk of Fame as Los Angeles Historic Cultural Monument #194. The city is interested in increasing transit access in this area. EPA supports projects that maximize the use of existing infrastructure, including public transportation, to expand transit ridership and decrease greenhouse gas emissions.

Property Information

The property is owned by the City of Los Angeles and comprises approximately 1,088 acres. The project focused on segments of the Hollywood Walk of Fame from Hollywood Boulevard from La Brea Avenue to Gower Street (1.3 miles) and on Vine Street (0.4 mile). The surrounding area has been developed over the last 60 years. Past businesses adjacent to the Hollywood Walk of Fame have included dry cleaners and gasoline service stations. Based on these uses, potential contamination at the property from these adjacent facilities is likely.

Technical Assistance

EPA provided technical assistance to research historic property uses and identify potential contaminants of concern at the property. This EPA-funded environmental assessment investigated potential contamination and conditions at the property considered for planned redevelopment or reuse. The inspection identified lead from vehicle exhaust fumes as a contaminant in the area. Additional potential sources of contamination include sites of historic underground storage tanks and properties where fuels or solvents may have impacted the soil.

Future Use

The City of Los Angeles is planning to revitalize the Hollywood Boulevard and Vine Street public right of way to expand public transportation access, to decrease traffic congestion and to improve pedestrian accessibility. The future project enhancements will increase walkability and accessibility and will provide environmental benefits for the community.

Property Information

Address Hollywood Walk of Fame
Los Angeles, California

County Los Angeles

Size 1,088 acres

Technical Assistance Recipient

City of Los Angeles

<https://www.lacitysan.org/brownfields>

Contacts

Nuna Tersibashian
City of Los Angeles, Citywide Brownfields
Program
(213) 485-3791
nuna.tersibashian@lacity.org

Noemi Emeric-Ford
U.S. Environmental Protection Agency
(213) 244-1821
emerick-ford.noemi@epa.gov

EPA's Targeted Brownfields
Assessment Program is a technical
service to conduct environmental
assessments on brownfield sites:

www.epa.gov/brownfields

