



# City of Los Angeles

## Integrated Resources Plan (IRP)

**Certification of Final Environmental Impact  
Report (EIR) and Adoption of IRP  
Recommendations**

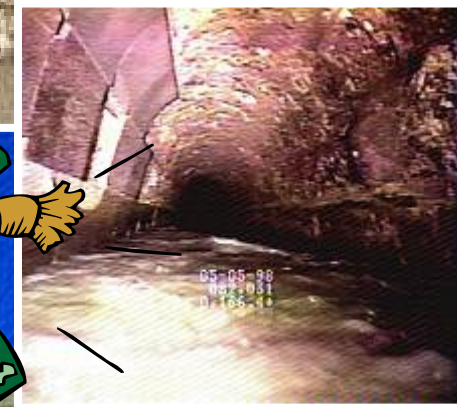
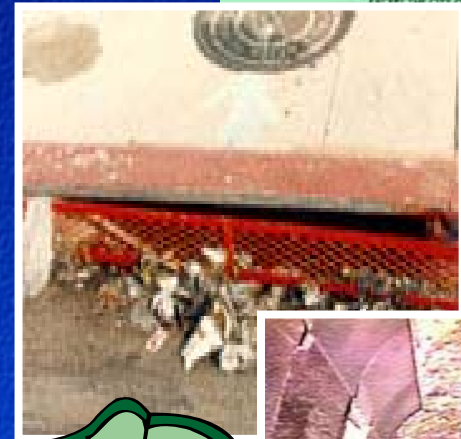
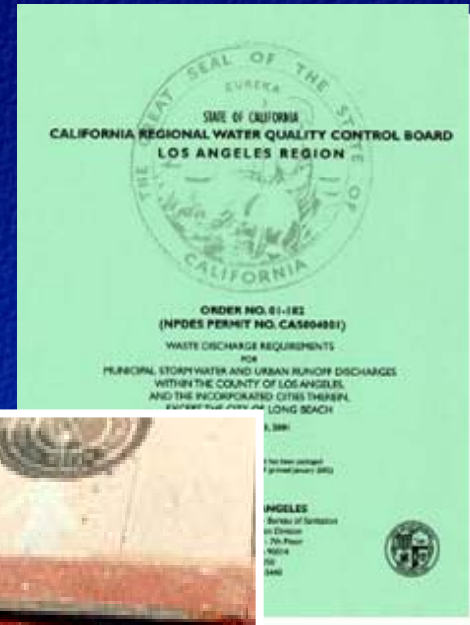


**City Council Meeting  
November 14, 2006**



# The Challenges

- New Regulations
- Growth & Aging Infrastructure
- Dependence on Imported Water
- Limited Open Space
- Limited Funds





# The Solutions

## PARTNERSHIPS



(Innovation, Commitment & Education)

Regulators

Policy Makers

Environmental Organizations

Community Groups

Businesses

Sister Agencies



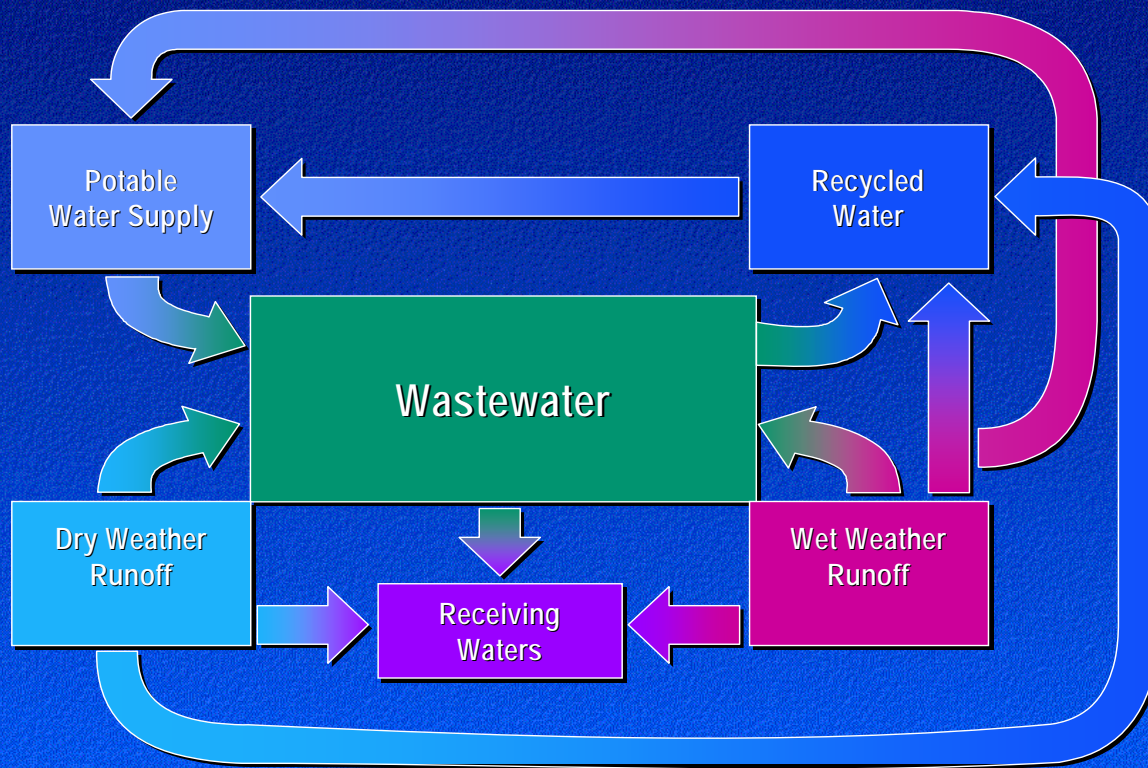


# The Solutions

# INTEGRATED PLANNING

Year 2020 - Integrated Resources Plan

(IRP)





# The Integrated Resources Plan (IRP)

The unique IRP process:

- Provided extensive, meaningful and interactive participation of diverse stakeholders throughout the planning process
- Integrated **wastewater** facilities planning with **water supply, water conservation, water recycling**, and **stormwater management** issues through a regional *watershed approach*.





# **IRP Phase II actively involved the community**

- **Steering Group: 117 participants**
- **Advisory Group: 218 participants**
- **Information Group: 232 participants**
- **Coordination with regional partners: Caltrans, SCAG, LA County DPW, ULARA Watermaster, MWD, USACE, US Bureau of Reclamation, MTA, City of Glendale, City of Burbank, LAUSD, others**
- **Coordination with City departments: DWP, Bureau of Sanitation, Bureau of Engineering, Planning, Mayor's Office, Council Offices, CAO, CLA, Rec & Parks, DONE, Environmental Affairs, City Attorney's office, PAO, others**



# **IRP Phase II actively involved the community**

- **13 Steering Group Workshops (1/2 day)**
- **20 Advisory Group Meetings**
- **49 Coordination meetings with regional agencies/City Departments**
- **55 Pre-DEIR Community Meetings**
- **4 Public Hearings**
- **4 Information Group Newsletters, sent to over 500 people**

**Over 140 meetings!**



# **IRP Documents (All Available on Website at [www.lacity.org/SAN/irp](http://www.lacity.org/SAN/irp))**

- **Facilities Plan (4 volumes) – July 2004:**
  - **Vol 1: Wastewater Management**
  - **Vol 2: Water Management**
  - **Vol 3: Runoff Management**
  - **Vol 4: Alternatives Development and Analysis**
- **Environmental Impact Report – Draft (Nov 2005) and Final (Sept 2006)**



# Draft Alternatives in EIR

Alt. 1	Hyperion 500 mgd, moderate potential for water resources projects
Alt. 2	Tillman 80 mgd and LAG 30 mgd, high potential for water resources projects
Alt. 3	Tillman 100 mgd, moderate potential for water resources projects
Alt. 4	Tillman 100 mgd, high potential for water resources projects

These alternatives reflect the spectrum of wastewater assumptions, provide leadership in water resources and balance today's financial realities.



# Opportunities to Submit Comments on DEIR

- Original Public Comment Period: 90 days (through February 27, 2006)
- Extended Public Comment Period: 120 days (through March 31, 2006)
- Comments were submitted online, emailed, mailed, faxed, or recorded orally at the public hearings:
  - Van Nuys City Hall
  - West Los Angeles
  - Downtown LA
  - LA Zoo
- Additional community briefings and meetings occurred on site-specific issues

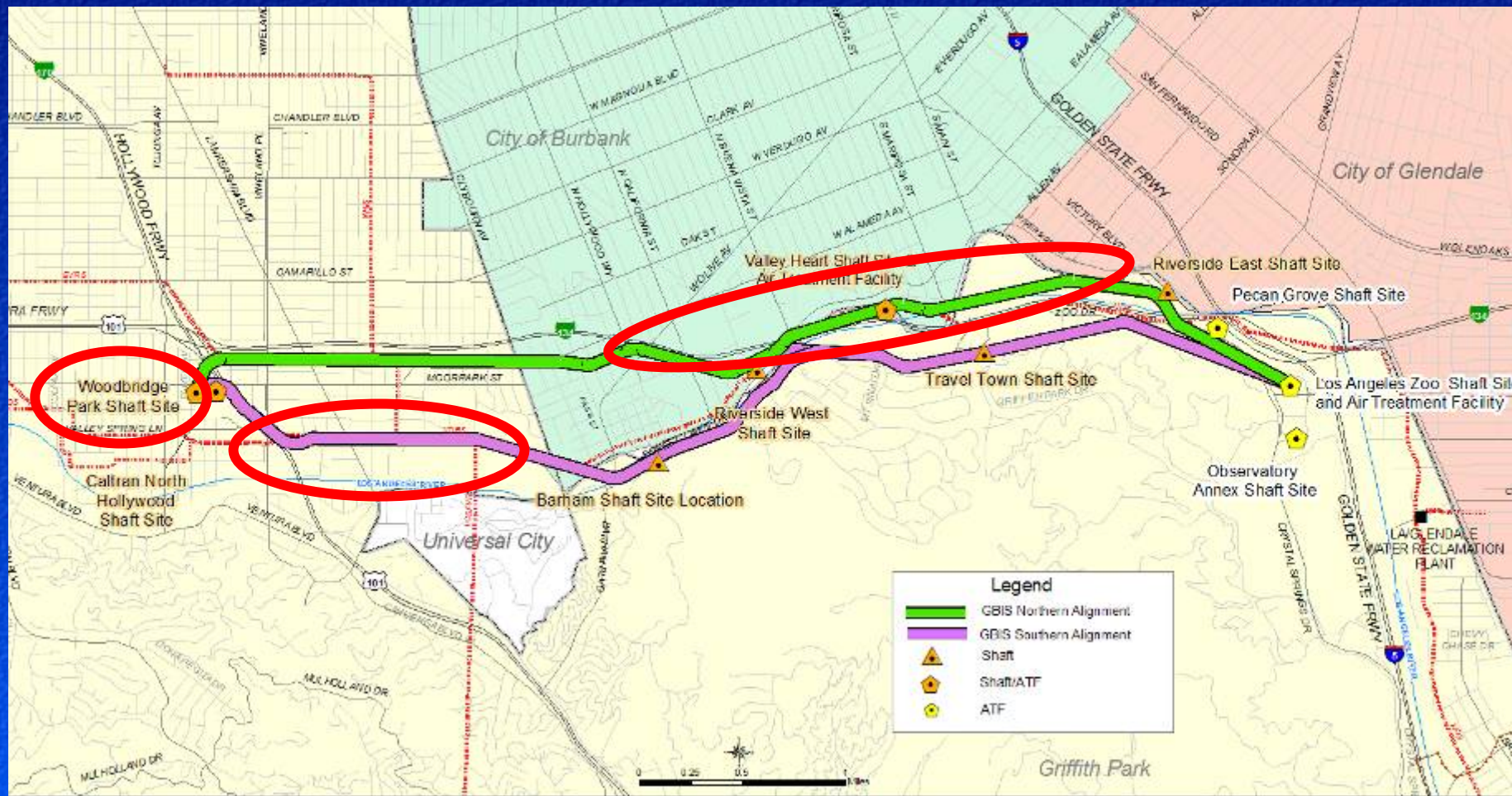


# **EIR Comments Received – Let's Look at the Numbers**

- **2,767 comments letters**
  - **26 from agencies and local municipalities**
  - **22 from organizations**
  - **494 from individuals**
  - **Over 1,600 form letters**
  - **Remainder from public meetings**
- **Copies of all comments and responses are included in the Final EIR**

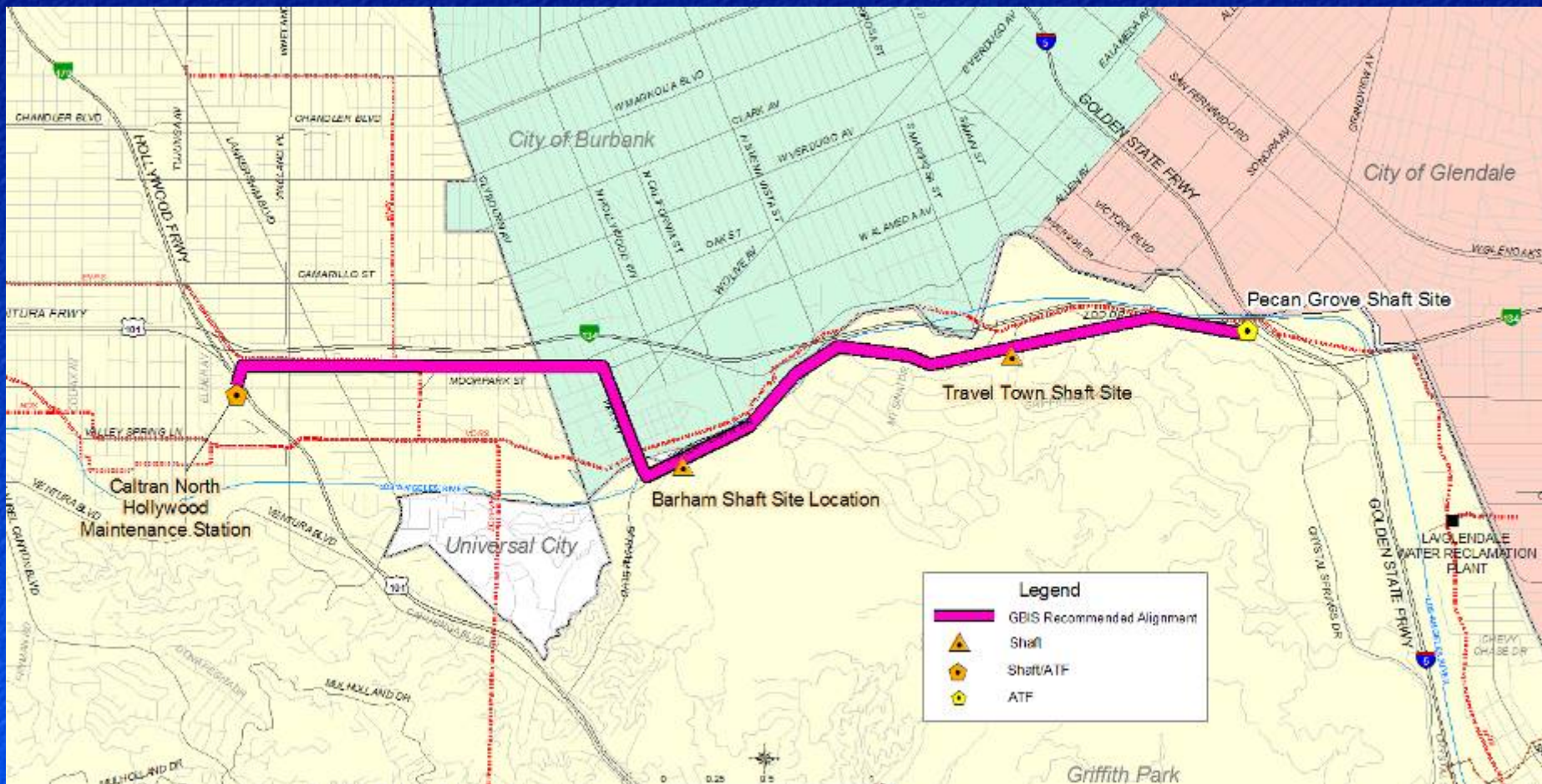


# General Overview of Comments: Glendale-Burbank Interceptor Sewer





# Glendale-Burbank Interceptor Sewer – Staff Recommended Alignment





# **General Overview of Comments**

## **■ El Segundo**

- Comments on odor, noise, aesthetics**

## **■ Comments on alternatives**

- Expand treatment plants in areas distant from homeowners**
- Maximize sustainability and select either Alt 2 or 4 because of their watershed approach**
- Maximize use and reuse of urban runoff and maximize recycled water production at LAG**



# **Consideration of Draft EIR Comments**

- **City considered and responded to DEIR comments submitted during the review period**
- **City integrated additional input from public and agency comments on the DEIR into the FEIR**
- **Specific revisions included:**
  - **Identification of GBIS and NEIS-II Alignments that meet system needs and minimize impacts**
  - **Identification of the staff-recommended alternative**
  - **Additional voluntary measures to address public comments**



# **Staff Recommendations**

---

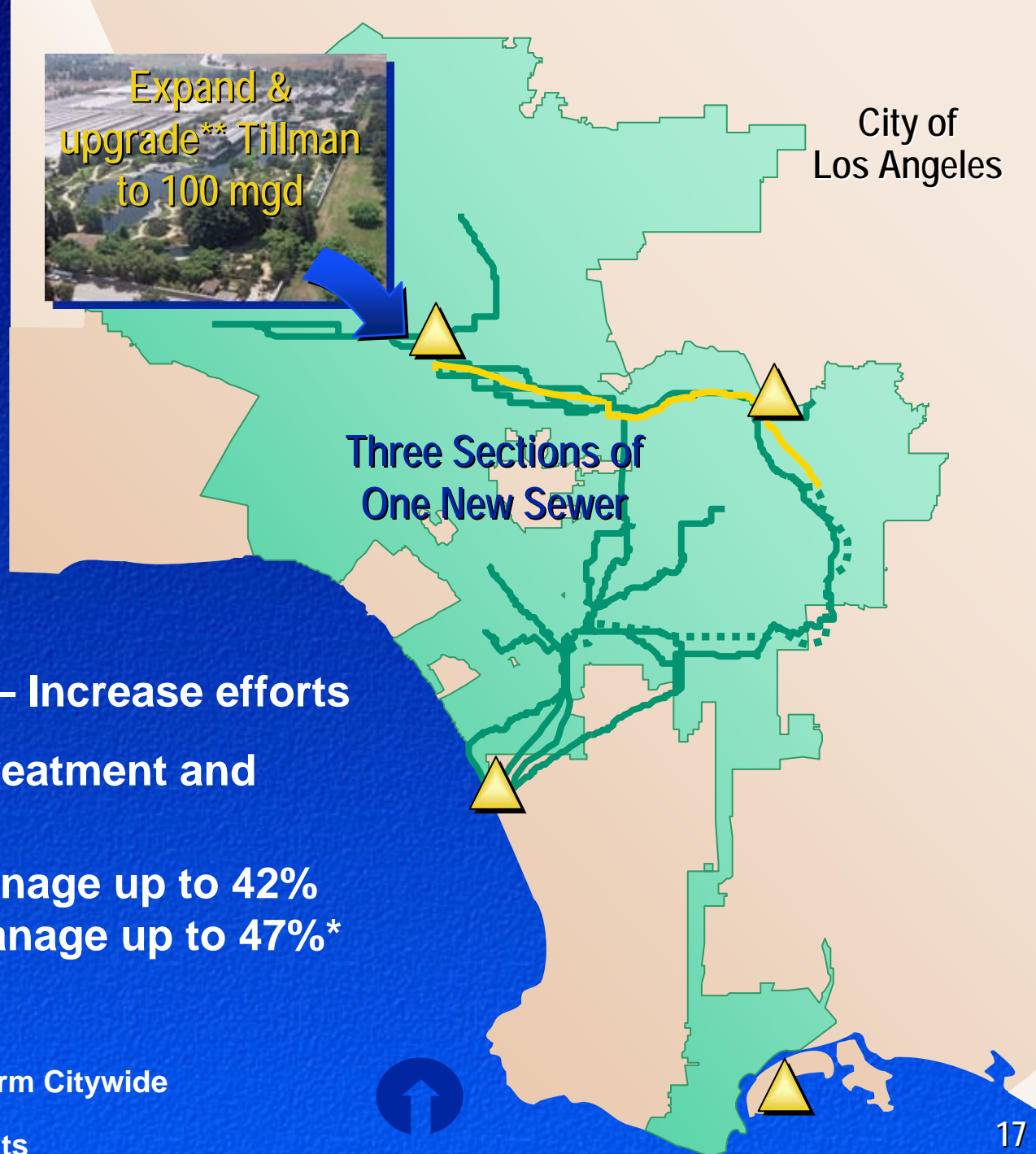


# Staff Recommended Alternative - Alternative 4 Tillman Expansion, High Water Resources

- Water Reclamation:  
Use up to 56,000  
acre-feet per year
- Water Conservation – Increase efforts
- Runoff Reduction, Treatment and  
Beneficial Use
  - Dry Weather: Manage up to 42%
  - Wet Weather: Manage up to 47%\*

\*Percent of runoff from ½ inch storm Citywide

\*\*Dependent on permit requirements





# IRP Staff Recommendations

- Implementation Strategy based on triggers
  - **Go Projects:** projects that have been evaluated in EIR as a site specific project and are recommended to be implemented immediately because associated triggers have been met
  - **Go If Triggered Projects:** projects recommended to be implemented in the future, once a certain trigger is reached
  - **Go Policy Directions:** specific directions to staff on the next studies and evaluations required to provide progress on programmatic elements in the preferred alternative



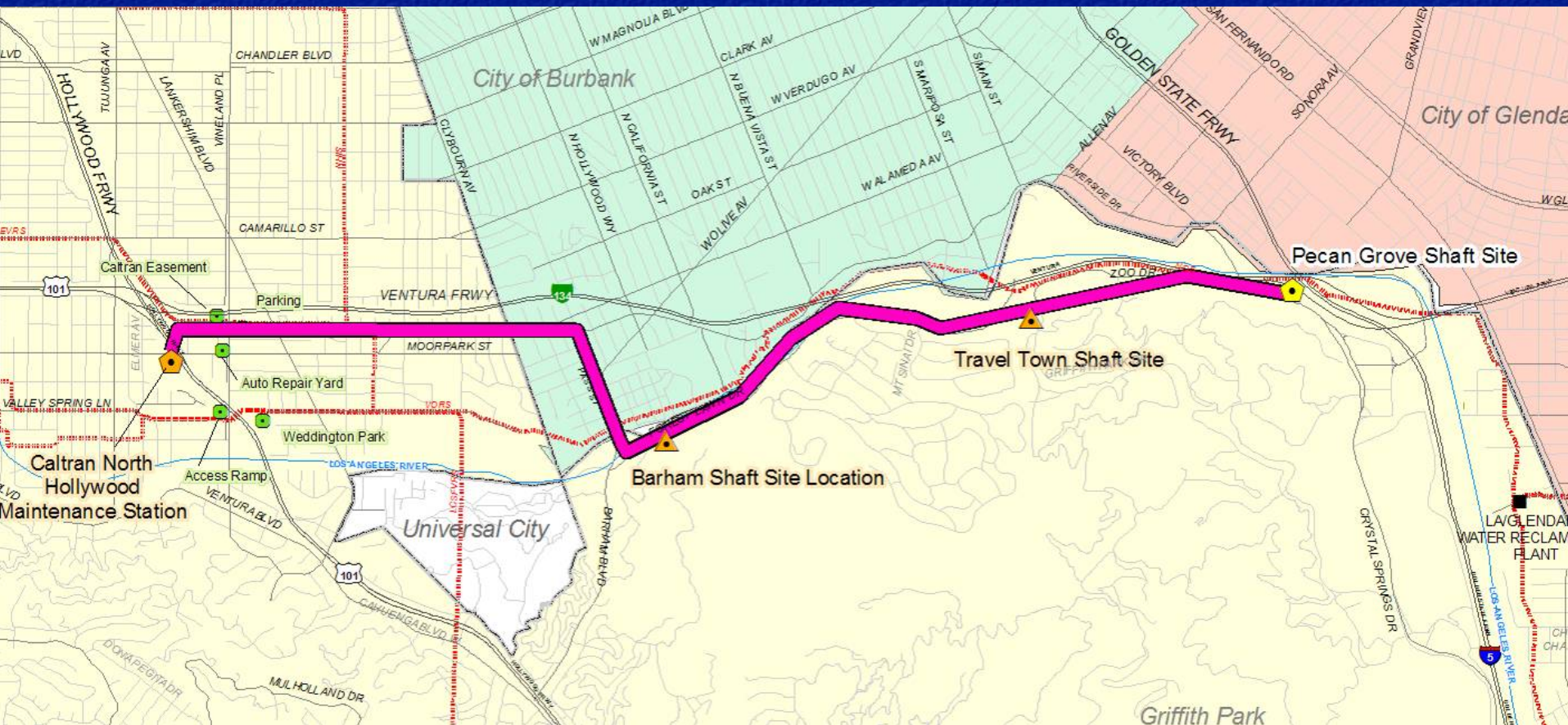
# Recommended Go Projects

- Projects that have been evaluated in EIR as a site specific project and are recommended to be implemented immediately because associated triggers have been met





# Staff Recommended GBIS Alignment

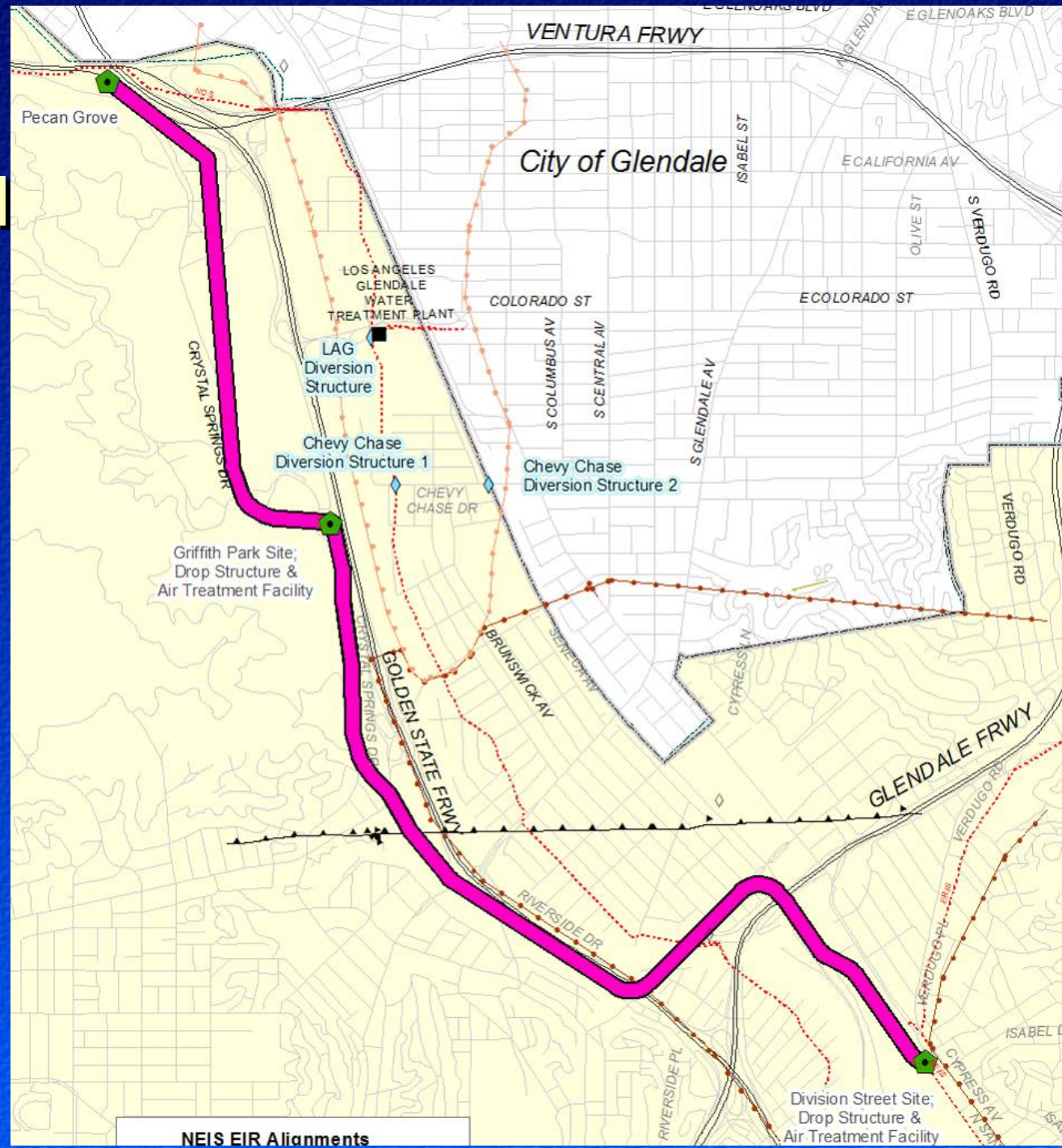


- Avoids impacts associated with the eastern portion of the GBIS North Alignment
- Avoids contingency response issues and concerns along the western portion of the GBIS South Alignment



# Staff Recommended NEIS II Alignment

- West Alignment Option B
- Better constructability
- Fewer right-of-way acquisitions





# Recommended Go If Triggered Projects

- **Projects recommended to be implemented in the future, once a certain trigger is reached**
    - Population growth
    - Recycled water regulations
    - Wastewater discharge regulations (to LA River)
    - Total Maximum Daily Load (TMDL) requirements for LA River, Santa Monica Bay, Ballona Creek
    - Available funding





# **Recommended Go Policy Directions**

## ■ **Recycled Water**

### — **Non-Potable Uses**

- **Maximize recycled water by conducting customer surveys and marketing plan**
- **Dual plumbing for large developments in purple corridor**
- **Coordinate construction of recycled water lines with other projects**

### — **Indirect-Potable Uses (Groundwater Replenishment)**

- **Develop Outreach plan and conduct feasibility review**

### — **Environmental Uses**

- **Support LA River and other environmental uses**





# Recommended Go Policy Directions

- **Water Conservation**
  - Reduce outdoor water usage
  - Implement smart irrigation for large developments
  - Provide incentives



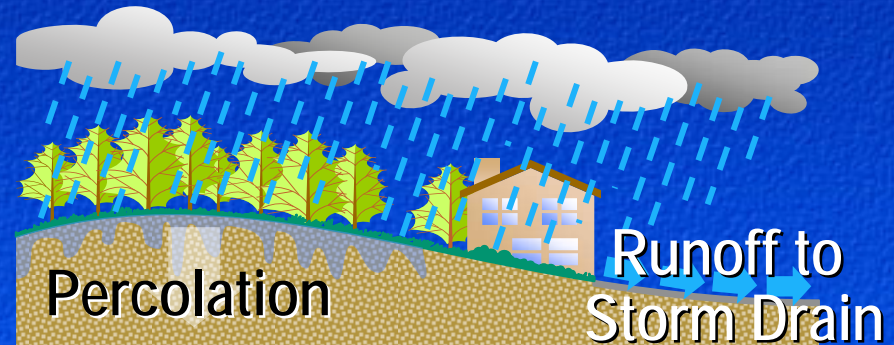


# Recommended Go Policy Directions

## ■ Runoff Management

### — Wet Weather Runoff

- Increase onsite capture, retention, reuse and infiltration
- Increase use of porous pavement
- Revise SUSMP
- Power easements and vacant lots



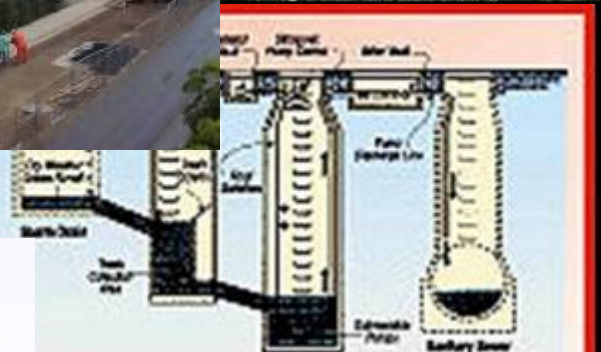


## Recommended Go Policy Directions

## ■ Runoff Management

## — Dry Weather Runoff

- **Low flow Diversions**
- **URPs**
- **Wetlands**
- **Smart irrigation**



## Low Flow Diversion Structure



# Environmental Impacts of the Recommended Alternative

## ■ Potentially significant project and/or cumulative impacts:

- Aesthetics
- Air Quality
- Biological Resources
- Coastal Resources
- Archaeological Resources
- Paleontological Resources
- Geology
- Hazards
- Hydrology and Water Quality
- Noise and Vibration
- Recreation



# **The Recommended Sewer Alignments Have Minimized the Potential for Significant Impacts**

## **■ GBIS Hybrid Alignment**

- Construction shaft sites would avoid the City of Burbank and Woodbridge Park, and would minimize impacts to Griffith Park facilities**
- Addresses concerns of Burbank residents at the Pollywog, including Aesthetic, Air Quality, Odor and Noise, Equestrian Use impacts**
- Incorporates voluntary measures to minimize settlement, noise and vibration, and traffic impacts along Pass Avenue**

## **■ NEIS II West Alignment**

- Avoids tunneling in contaminated groundwater.**
- More favorable geology will facilitate construction**



# **Mitigation Measures will Reduce Project Impacts to a Less than Significant Level**

- **Aesthetics**
- **Biological Resources**
- **Coastal Resources**
- **Hazards**
- **Noise and Vibration**



# Potentially Significant Impact will Remain - Requires a Statement of Overriding Considerations

- Air Quality
- Cultural Resources (archaeological and paleontological resources and Native American remains)
- Geology
- Hydrology and Water Quality
- Recreation
- Cumulative Impacts: Air Quality
- Cumulative Impacts: Biological Resources
- Cumulative Impacts: Hydrology and Water Quality
- Cumulative Impacts: Noise



# Estimated Capital Costs

Go Projects	Estimated Capital Cost (in \$2006)
Wastewater Storage at Tillman	\$120 million
Wastewater Storage at LAG	\$20 million
Recycled Water Storage at LAG	\$8 million
Glendale-Burbank Interceptor Sewer (GBIS)	\$196 million
Northeast Interceptor Sewer II (NEIS II)	\$230 million
Total Go Projects	\$663 million



# Estimated Capital Costs

Go if Triggered Projects	Estimated Capital Cost (in \$2006)
Tillman Upgrade to Advanced Treatment at 80 mgd	\$339 million
Tillman Expansion to 100 mgd (with advanced)	\$210 million
LAG Upgrade to Advanced Treatment at 20 mgd	\$105 million
Hyperion Secondary Clarifiers	\$92 million
Hyperion Digesters (12)	\$303 million
Valley Spring Lane Interceptor Sewer (VSLIS)	\$156 million
Total Go Projects	\$1,205 million



# **Recent Communications from City of Burbank regarding recommended GBIS alignment**

- Letter dated October 31, 2006 questioning adequacy of the FEIR and its compliance with CEQA
- Letter dated November 9, 2006 proposing mitigation measures to be adopted as part of FEIR certification



## **October 31, 2006 Letter: Key Issues Raised by Burbank and City of LA's Responses**

- **City of Burbank (Burbank) should be named in the FEIR as a Responsible Agency under CEQA.**
- **City of Los Angeles:**
  - **Burbank was listed in EIR under Table 1-3, Agencies.**
  - **Burbank participated in the IRP stakeholder group.**
  - **Burbank was treated as a partner, more than as a responsible agency:**
    - **EIR-related documents were directly submitted to the City of Burbank, included Administrative Drafts of the EIR**
    - **Many staff & community meetings were held**
    - **Mailed direct notifications to Burbank residents at various stages of the EIR**



## **October 31, 2006 Letter: Key Issues Raised by Burbank and City of LA's Responses**

- **City of Burbank: Recommended GBIS Alignment is a New Alignment**
- **City of Los Angeles:**
  - **Recommended Alignment is a minor modification of the two GBIS Alignments**
  - **Construction would be from the same Shaft Sites (located outside the City of Burbank boundaries) as discussed in the DEIR**
  - **All anticipated impacts from the minor modification were already analyzed as part of the Draft EIR.**
  - **DEIR review period was extended to seek comments from community in the vicinity of the connector tunnel**



# **October 31, 2006 Letter: Key Issues Raised by Burbank and City of LA's Responses**

- **City of Burbank: Burbank Segment of GBIS Not Sufficiently Analyzed**
- **City of Los Angeles:**
  - All anticipated impacts from the minor modification were already analyzed as part of the Draft EIR
  - Impacts would be similar type and intensity
  - Construction from the same Shaft Sites discussed in the EIR
  - Mitigations in EIR would apply
  - DEIR review period was extended to seek comments from community in the vicinity of the connector tunnel. Comments received and addressed in FEIR.



# **October 31, 2006 Letter: Key Issues Raised by Burbank and City of LA's Responses**

- **City of Burbank: Draft EIR Should Be Recirculated**
- **City of Los Angeles:**
  - Recommended GBIS Alignment is not a new alignment
  - Recommended GBIS Alignment reduces impact concerns in Burbank Rancho area and Toluca Lake area.
  - Although not needed, Comment period extended by 32 days & notified community was notified of both the extension & the revised alignment
  - New information is not significant and the public has not been deprived of commenting on the GBIS alignments.



# **October 31, 2006 Letter: Key Issues Raised by Burbank and City of LA's Responses**

- **City of Burbank: Voluntary Measures and Mitigation Measures are Not Enforceable**
- **City of Los Angeles:**
  - **Voluntary measures added to the MMRP for transparent and verifiable implementation**
  - **Burbank and Los Angeles staff coordinated in developing these measures and confirmed in a letter dated June 13, 2006.**
  - **Voluntary measures are conditions of approval of the FEIR and must be implemented**



# **November 9, 2006 Letter: Key Issues Raised by Burbank and City of LA's Responses**

- **Propose feasible mitigation measures to be adopted as part of the FEIR certification**
  - **Indemnify Burbank from construction-related damage**
  - **Pay for independent inspection of construction within Burbank**
  - **Provide Traffic Control Plan within Burbank**
  - **Provide Noise Control & Monitoring Plan within Burbank**
  - **Provide Vibration Control Plan within Burbank**
  - **Establish 24-hour hotline and notification/outreach**
  - **Submit Construction drawings**



# **November 9, 2006 Letter: Key Issues Raised by Burbank and City of LA's Responses**

- **Proposed mitigation measures continued**
  - **Provide Geotechnical report**
  - **Avoid surface construction within Burbank, including maintenance hole structures and construction shaft sites.**
  - **Repair any damage to utilities in Burbank due to GBIS**
  - **In the event of surface construction due to GBIS construction in Burbank, City shall repave entire width of roadway up to nearest interception in each both directions.**
  - **Obtain all permits from Burbank as necessary and applicable**



## **Request following City Council actions:**

- **Certify IRP Final Environmental Impact Report**
- **Adopt Statement of Findings and Overriding Considerations**
- **Adopt Mitigation Monitoring and Reporting Plan**
- **Adopt Staff Recommended Alternative 4 as the recommended alternative for the IRP**
- **Approve the Implementation Strategy for the IRP**
- **Instruct staff to file the attached NOD within 5 working days of City Council approval**
- **Instruct Department of Public Works' Bureau of Sanitation to report annually on the progress in achieving the recommendations**



# Questions?

