

CITY OF LOS ANGELES

CALIFORNIA



ANTONIO R. VILLARAIGOSA
MAYOR

BUREAU OF SANITATION

ENRIQUE C. ZALDIVAR
DIRECTOR

TRACI J. MINAMIDE
CHIEF OPERATING OFFICER

VAROUJ S. ABKIAN
ADEL H. HAGEKHALIL
ALEXANDER E. HELOU
ASSISTANT DIRECTORS

NEIL M. GUGLIEMO
ACTING CHIEF FINANCIAL OFFICER

KHALIL M. GHARIOS, DIVISION MANAGER
1149 SOUTH BROADWAY, 5TH FLOOR
LOS ANGELES, CA 90015
TEL: (213) 485-3002
FAX: (213) 485-2959

BOARD OF
PUBLIC WORKS
COMMISSIONERS
ANDREA A. ALARCÓN
PRESIDENT
JERILYN LÓPEZ MENDOZA
VICE PRESIDENT
STEVEN T. NUTTER
COMMISSIONER
VALERIE LYNNE SHAW
COMMISSIONER

July 16, 2012

Peter Jan, Waste Management Engineer
CalRecycle
PO Box 4025
MS 10A-18
Sacramento, CA 95812-4025

LOPEZ CANYON LANDFILL (PERMIT NO. 19-AA-0820) – CLOSURE CONSTRUCTION COMPLETION, RECORDATION, & AS-BUILT COST

Dear Mr. Jan,

This is a follow-up to our submittal dated July 11, 2011 and to your letter dated August 8, 2011. The City of Los Angeles Bureau of Sanitation (BOS) hereby notifies CalRecycle that it has completed the remaining three (3) items for final closure certification of the Lopez Canyon Sanitary Landfill (LCSL): (1) Revegetation of Disposal Area C was completed on March 30, 2012, (2) As-Built Closure Cost Summary (27 CCR 21880[a][1]) (Attachment I), and (3) Recordation of the Site with the County Recorder (27 CCR 21170) was done June 21, 2012 (Attachment II).

With the final closure completion, we respectfully request that CalRecycle authorizes Union Bank of California to release the remaining balance of the Closure Trust Fund to the City of Los Angeles.

If you have any questions please contact John Hamilton by phone at (213) 847-2700 or by email at john.cobb.hamilton@lacity.org.

Respectfully,

Khalil M. Gharios, P.E., Division Manager
Solid Resources Processing and Construction Division

Attachments

cc: Timmie De Ramos, BOS
David Thompson, LEA

Jonathan Zari, BOS
Doug Cross, CRWQCB

Paul Blount, BOS



Attachment I

LOPEZ CANYON LANDFILL (PERMIT NO. 19-AA-0820) – AS-BUILT COST

Prepared By
City of Los Angeles
Bureau of Sanitation
Solid Resource Processing and Construction Division

The As-Built cost is required by 27 CCR 21880[a][1]. The As-Built Cost for the Lopez Canyon Landfill is a compilation of data from 1995 to March 2012 and does not follow any generally accepted or accredited methods. The procedures used for the cost report are described in detail in this report.

The costs are partitioned into four categories (1) Labor, (2) Equipment, (3) Materials, and (4) Consulting. The sum of each cost for each category for each year was determined over the span of the project from 1995 to 2012. The annual costs were converted to present value (PV) using the *Inflation Conversion Factors for Years 1774 to estimated 2020* (ICF) by Robert Sahr. These values between 1996 and 2011 are equal to the Annual Average Consumer Price Index (CPI) for all urban consumers as published by the United States Bureau of Labor Statistics (BLS). For the final summary table the BLS annual values were converted to those [inflationary factors] prescribed by CalRecycle for cost estimate reports. CalRecycle bases the factors on information obtained from the US Department of Resources, Bureau of Economic Analysis.

The costs are summarized in the Table 1 below. The total labor cost includes supervision, engineering, equipment operation, manual labor, benefits, and City overhead. **The final as-built closure project cost is \$26.9 million (in 2012 dollars).** The as-built cost is higher than the original finalized closure cost submitted to CalRecycle as part of the post closure plans. The reason for the relatively high cost was because the previous cost estimates didn't include City Overhead and compared to the original cost estimates, did not factor the cost associated with labor and equipment utilization during transition periods between landfill closure work and other City projects (that includes post closure maintenance at Lopez and other City landfill sites). Over three quarters of the closure cost was labor (58%) and equipment (22%).

Table 1:
Summary of Closure Construction Costs 1995 to 2012
(As-Built Cost Summary)

Labor Sub-Total	15,563,407	58%
Equipment	5,900,863	22%
Materials	3,600,073	13%
Consulting	1,880,697	7%
Total Cost (2012)	26,945,039	100%



The following explains in more detail the methodology of how the closure costs were compiled for each of the four categories (1) Labor, (2) Consulting, (3) Equipment, and (4) Materials. The total cost of each category is shown in Table 2.

1) Labor

Base labor and overtime cost data was taken from records of hours worked and wages. The overhead cost to the City of Los Angeles was calculated using the Annual Indirect Cost Rates - Cost Allocation Plan (CAP) Memorandums. These reports detail the cost rates to the City of Los Angeles for three categories, Fringe Benefits, Central Services, and Department Administration & Support. These rates were applied to the base cost to determine the entire cost for non-overtime hours worked. To determine the total cost for overtime hours, the Los Angeles City Controller Office generated overtime rate for each of the fiscal year during which closure activity was taking place. These rates were applied to overtime cost. The sum of the base labor and overtime hours, along with their respective overhead costs, was totaled and then converted to present value. The total labor cost for closure includes management cost calculated as 20% of the total yearly labor costs. Three years of data from 1997 to 1999 were missing and therefore were extrapolated by multiplying two factors, the calendar day labor present cost from 1996 and the calendar days spent on closure during those years. The overhead was then determined to be proportioned the same as 1996.

2) Equipment

The Lopez Canyon Landfill Closure equipment costs were calculated based on the initial purchase cost, equipment life, and the time the equipment was used for closure construction. The cost was first converted to present value. To determine the equipment cost associated with closure, two factors were calculated: 1-closure time to equipment life $[(13.9 \text{ years})/(\text{equipment life})]$ and 2-the fraction of time a piece of equipment was utilized for closure during the closure time $[(\text{time used for closure}/\text{total time for all City Projects that used equipment})]$. The product of the factors and the purchase price of the equipment were used to determine the cost applicable to closure. The salvage value was then subtracted from each equipment cost. Vehicle salvage values at City auctions are variable but roughly average around 10%. Ten percent was used as the salvage value for this cost report.

3) Materials

The materials utilized for the purpose of Lopez Canyon Landfill closure were purchased between 1998 and 2010. The materials also included \$39,200 hydro-seeding services in 2012. This isn't strictly a material but the majority of the cost was for seed and it was the only item that fell outside the four categories that we used to partition the costs so we put it here. The present value for purchased materials each year was calculated. Some materials were probably purchased before 1998 but there were no records of the purchases. A factor for partitioning materials between closure and post-closure maintenance was used because the same work order was used for both. The factor was determined based on the proportion of closed landfill area to total area at the time of purchase.

4) Consulting

Consulting services for Lopez Canyon Landfill were primarily provided by Geosyntec Consultants. Geosyntec Consultants were contracted by the City of Los Angeles to provide engineering services related to the closure construction quality control, environmental, natural resource utilization, and infrastructural work at the Lopez landfill site. All annual consulting costs provided for closure were converted to 2011 Present Value (PV). The raw data only contained aggregate costs from 1996 to 2003 and from 2004 to March 2011. The average annual cost was determined from each time period using the respective aggregate cost. From these averages the present value of the annual costs was determined.

Lopez Closure Cost Summary

Table 2

Total **\$26,945,039** (2012 Dollars)⁶

Year	Standard Labor Overhead				Supervision Overhead				Labor Total				Equipment				Materials				Total			
	Gross Labor ¹	Fringe Benefits	Central Services	Dept Admin. & Support	Construction Supervision ²	Fringe Benefits ³	Central Services ⁴	Dept Admin. & Support ⁵																
1995	\$342,297.40	\$120,531.44	\$151,315.51	\$18,045.93	\$68,459.48	\$24,106.29	\$30,263.10	\$3,609.19	\$758,628.34	\$0.00	\$0.00	\$0.00	\$5,052,096.75	\$0.00	\$0.00	\$0.00	\$0.00	\$0.00	\$0.00	\$0.00	\$5,810,725	\$0.00	\$0.00	\$0.00
1996	\$640,566.24	\$263,382.09	\$789,519.17	\$33,096.92	\$128,113.25	\$52,676.42	\$157,903.83	\$6,619.38	\$2,071,877.30	\$188,172.23	\$0.00	\$0.00	\$0.00	\$0.00	\$0.00	\$0.00	\$0.00	\$0.00	\$0.00	\$0.00	\$2,260,050	\$0.00	\$0.00	\$0.00
1997	\$770,040.59	\$316,268.24	\$948,051.66	\$39,874.82	\$154,008.12	\$63,253.65	\$189,610.33	\$7,974.96	\$2,489,082.36	\$183,261.75	\$0.00	\$0.00	\$0.00	\$0.00	\$0.00	\$0.00	\$0.00	\$0.00	\$0.00	\$0.00	\$2,672,344	\$0.00	\$0.00	\$0.00
1998	\$852,721.27	\$350,226.54	\$1,049,845.73	\$43,970.72	\$170,544.25	\$70,045.31	\$209,969.15	\$8,794.14	\$2,756,117.11	\$181,187.77	\$0.00	\$0.00	\$0.00	\$0.00	\$0.00	\$0.00	\$126,140.87	\$0.00	\$0.00	\$0.00	\$3,063,446	\$0.00	\$0.00	\$0.00
1999	\$175,381.75	\$72,032.15	\$215,924.92	\$9,155.55	\$35,076.35	\$14,406.43	\$43,184.98	\$1,831.11	\$566,993.24	\$175,033.28	\$0.00	\$0.00	\$780,693.70	\$0.00	\$0.00	\$0.00	\$0.00	\$0.00	\$0.00	\$0.00	\$1,522,720	\$0.00	\$0.00	\$0.00
2000	\$404,577.09	\$111,043.61	\$547,275.04	\$15,217.89	\$80,915.42	\$22,208.72	\$109,455.01	\$3,043.58	\$1,293,736.35	\$166,485.19	\$0.00	\$0.00	\$0.00	\$0.00	\$0.00	\$0.00	\$270,725.11	\$0.00	\$0.00	\$0.00	\$1,730,947	\$0.00	\$0.00	\$0.00
2001	\$209,740.09	\$59,151.44	\$278,504.67	\$14,074.23	\$41,948.02	\$11,830.29	\$55,700.93	\$2,814.85	\$673,764.51	\$160,859.47	\$0.00	\$0.00	\$35,690.17	\$0.00	\$0.00	\$0.00	\$1,341,233.70	\$0.00	\$0.00	\$0.00	\$2,211,548	\$0.00	\$0.00	\$0.00
2002	\$735,701.87	\$205,331.69	\$692,755.90	\$23,148.82	\$147,140.37	\$41,066.34	\$138,551.18	\$4,629.76	\$1,988,325.94	\$158,998.42	\$0.00	\$0.00	\$32,382.71	\$0.00	\$0.00	\$0.00	\$838,737.24	\$0.00	\$0.00	\$0.00	\$2,986,062	\$0.00	\$0.00	\$0.00
2003	\$159,599.67	\$37,206.95	\$155,436.73	\$10,408.44	\$31,919.93	\$7,441.39	\$31,087.35	\$2,081.69	\$435,182.15	\$71,345.50	\$0.00	\$0.00	\$0.00	\$0.00	\$0.00	\$0.00	\$265,817.06	\$0.00	\$0.00	\$0.00	\$887,387	\$0.00	\$0.00	\$0.00
2004	\$91,300.16	\$24,301.57	\$87,066.27	\$9,141.06	\$18,260.03	\$4,860.31	\$17,413.25	\$1,828.21	\$254,170.89	\$68,134.57	\$0.00	\$0.00	\$0.00	\$0.00	\$0.00	\$0.00	\$7,646.92	\$0.00	\$0.00	\$0.00	\$513,919	\$0.00	\$0.00	\$0.00
2005	\$82,822.76	\$32,820.76	\$78,445.26	\$6,560.11	\$16,564.55	\$6,564.15	\$15,689.05	\$1,312.02	\$240,778.67	\$68,805.49	\$0.00	\$0.00	\$0.00	\$0.00	\$0.00	\$0.00	\$0.00	\$0.00	\$0.00	\$0.00	\$316,560	\$0.00	\$0.00	\$0.00
2006	\$128,917.23	\$50,790.18	\$158,971.33	\$9,287.72	\$25,783.45	\$10,158.04	\$31,794.27	\$1,857.54	\$417,559.76	\$65,805.49	\$0.00	\$0.00	\$0.00	\$0.00	\$0.00	\$0.00	\$0.00	\$0.00	\$0.00	\$0.00	\$483,365	\$0.00	\$0.00	\$0.00
2007	\$226,965.65	\$90,780.13	\$318,489.78	\$18,224.75	\$45,393.13	\$18,156.03	\$63,697.96	\$3,644.95	\$785,352.37	\$64,020.40	\$0.00	\$0.00	\$0.00	\$0.00	\$0.00	\$0.00	\$44,998.09	\$0.00	\$0.00	\$0.00	\$894,371	\$0.00	\$0.00	\$0.00
2008	\$0.00	\$0.00	\$0.00	\$0.00	\$0.00	\$0.00	\$0.00	\$0.00	\$0.00	\$0.00	\$0.00	\$0.00	\$0.00	\$0.00	\$0.00	\$0.00	\$163,806.59	\$0.00	\$0.00	\$0.00	\$224,745	\$0.00	\$0.00	\$0.00
2009	\$77,108.27	\$35,869.54	\$94,062.99	\$6,843.26	\$15,421.65	\$7,173.91	\$18,812.60	\$1,368.65	\$256,660.87	\$62,679.40	\$0.00	\$0.00	\$0.00	\$0.00	\$0.00	\$0.00	\$308,692.52	\$0.00	\$0.00	\$0.00	\$628,033	\$0.00	\$0.00	\$0.00
2010	\$136,749.26	\$59,053.51	\$167,502.20	\$9,070.98	\$27,349.85	\$11,810.70	\$33,500.44	\$1,814.20	\$446,851.14	\$61,446.34	\$0.00	\$0.00	\$0.00	\$0.00	\$0.00	\$0.00	\$4,672.20	\$0.00	\$0.00	\$0.00	\$512,970	\$0.00	\$0.00	\$0.00
2011	\$39,228.19	\$16,955.76	\$48,094.12	\$2,660.07	\$7,845.64	\$3,391.15	\$9,618.82	\$532.01	\$128,325.76	\$58,323.08	\$0.00	\$0.00	\$0.00	\$0.00	\$0.00	\$0.00	\$0.00	\$0.00	\$0.00	\$0.00	\$186,649	\$0.00	\$0.00	\$0.00
2012	\$0.00	\$0.00	\$0.00	\$0.00	\$0.00	\$0.00	\$0.00	\$0.00	\$0.00	\$0.00	\$0.00	\$0.00	\$0.00	\$0.00	\$0.00	\$0.00	\$39,199.99	\$0.00	\$0.00	\$0.00	\$39,200	\$0.00	\$0.00	\$0.00
Total	\$5,073,717.49	\$1,845,745.60	\$5,781,261.27	\$268,781.28	\$1,014,743.50	\$369,149.12	\$1,156,252.25	\$53,756.26	\$15,563,406.76	\$1,880,696.67	\$0.00	\$0.00	\$5,900,863.33	\$3,600,072.67	\$0.00	\$0.00	\$3,600,072.67	\$0.00	\$0.00	\$0.00	\$26,945,039	\$0.00	\$0.00	\$0.00
Total Cost (%)	19%	7%	21%	1%	4%	1%	4%	0%	58%	7%			22%				13%				100%			

1 - Includes present value standard pay and any applicable overtime.

2 - Calculated as 20% of the yearly labor cost

3 - Calculated as 20% of the yearly Fringe Benefit cost.

4 - Calculated as 20% of the yearly Central Services cost.

5 - Calculated as 20% of the yearly Dept Admin. & Support cost.

6 - Values in this Summary Table were converted from Bureau of Labor Statistics to CalRecycle Inflation Factors

Attachment II

This page is part of your document - DO NOT DISCARD



20120924158



Pages:
0013

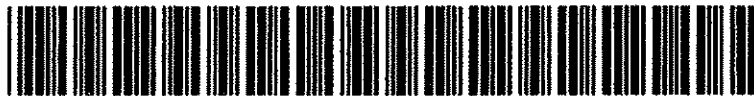
Recorded/Filed in Official Records
Recorder's Office, Los Angeles County,
California

06/21/12 AT 11:41AM

FEES:	0.00
TAXES:	0.00
OTHER:	0.00
PAID:	0.00



LEADSHEET



201206210010056

00005998974



004083102

SEQ:
01

DAR - Counter (Hard Copy)



THIS FORM IS NOT TO BE DUPLICATED

Please Return to:
John Hamilton
1149 South Broadway
5th Floor, Mail Stop 624
Los Angeles, CA 90015-2213



SPACE ABOVE FOR REGISTRAR-RECORDER'S USE ONLY

NOTICE OF CLOSURE OF SOLID WASTE DISPOSAL SITE

This notice applies to the following described property commonly known as Lopez Canyon Sanitary Landfill, located in the County of Los Angeles, State of California:

Assessor's Parcel Number (APN): 2526003909

Pursuant to the California Code of Regulation (CCR), Title 27, Chapter 3, Subchapter 5, Article 2, Section 21170 the following is submitted for official recordation:

1. *Lopez Canyon Landfill Closure Compliance Certification, Khalil Gharos, P.E.*
2. *Lopez Canyon Sanitary Landfill Closure – Los Angeles County Document Recording Letter, City of Los Angeles, Solid Resources Processing and Construction Division (SRPCD)*
3. *Approval of Final Closure Construction Quality Assurance Reports, Lopez Canyon Sanitary Landfill, Lake View Terrace, California (File No. 69-068, Order No. R4-2004-0176, CI-5636), California Regional Water Quality Control Board (CRWQCB)*
4. *Lopez Canyon Landfill, City of Los Angeles (19-AA-00820) Acceptance of Partial Final Closure Certification, Department of Resources Recycling and Recovery (CalRecycle)*
5. *Lopez Canyon Landfill (SWFP # 19-AA-0820) Transmittal of Official SWFP Closure Permit, City of Los Angeles, LEA Program Supervisor*
6. *Solid Waste Facility Permit (19-AA-0820), City of Los Angeles Bureau of Sanitation*
7. *Lopez Canyon Landfill As-Built Topographic Map (Drawing No. A-01), City of Los Angeles, Solid Resources Processing and Construction Division (SRPCD)*
8. *Lopez Canyon Sanitary Landfill Deliniated Disposal Areas (Drawing No. A-02), City of Los Angeles, Solid Resources Processing and Construction Division (SRPCD)*

Title 27 CCR, Section 21170 Compliance Certification

As required by Section 21170 of CCR, Title 27, this certifies that the closure of Lopez Canyon Landfill has been completed. Pursuant to California State regulation the following is provided:

1. **Date closure was completed:** March 30, 2012.
2. **Boundaries of the filled area:** The disposal boundaries, depth and areas are summarized in the table below, and further detailed on the attached drawings (A-01 and A-02).

Lopez Canyon Landfill Closure Sections		Closure Date	Fill Area Depth (feet)	Area (acres)	Area (percent)	Total Acres
A	A Deck	9/15/2007	200	14.4	9.8	30.41
	A Slope	3/18/1999		16.01	10.9	
B	B Deck	10/15/2006	190	11.29	7.7	39.17
	B Slope	10/14/1997		27.88	19.0	
AB+	AB+ Deck	8/28/2000	120	25.45	17.3	42.96
	AB+ Slope	7/15/2010		17.51	11.9	
C	C Deck	3/11/2011	150	22	15.0	34.22
	C Slope	3/11/2011		12.22	8.3	
All Disposal Sections (completion of hydroseeding)		3/30/2012	660	146.76	100.0	146.76

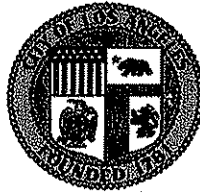
3. **Location where the closure and postclosure plans can be obtained:** The Lopez Canyon Landfill Closure and Postclosure plans are located in the City of Los Angeles Public Works Building. The address is 1149 South Broadway, 5th Floor, Los Angeles, CA 90015.
4. **Future site use is restricted in accordance with the postclosure maintenance plan:** Any and all future site use will be in accordance with the latest closure and post closure maintenance plans.

Additional details, including site maps, are attached for further reference. The information presented in this recording to the best of my knowledge satisfies all requirements of 27 CCR 21170 for closure of the Lopez Canyon Landfill. My Seal as a registered professional engineer licensed in the State of California is affixed below.



Khalil Gharios, P.E.

CITY OF LOS ANGELES
CALIFORNIA



ANTONIO R. VILLARAIGOSA
MAYOR

BOARD OF
PUBLIC WORKS

COMMISSIONERS

ANDREA A. ALARCÓN
PRESIDENT

JERILYN LÓPEZ MENDOZA
VICE PRESIDENT

JOHN J. CHOI
PRESIDENT PRO TEMPORE

STEVEN T. NUTTER
COMMISSIONER

VALERIE LYNNE SHAW
COMMISSIONER

DEPARTMENT OF
PUBLIC WORKS

BUREAU OF SANITATION

ENRIQUE C. ZALDIVAR
DIRECTOR

TRACI J. MINAMIDE
CHIEF OPERATING OFFICER

VAROUJ S. ABKIAN
ADEL H. HAGEKHALIL
ALEXANDER E. HELOU
ASSISTANT DIRECTORS

KHALIL M. GHARIOS, P.E., DIV. MANAGER
1149 SOUTH BROADWAY, 5TH FLOOR
LOS ANGELES, CA 90015
TEL: (213) 486-3002
FAX: (213) 486-2969

July 18, 2012

Los Angeles County Registrar-Recorder/County Clerk Office
12400 East Imperial Highway
Norwalk, CA 90650

Attn: Dean C. Logan, Los Angeles County Registrar-Recorder/County Clerk

**LOPEZ CANYON SANITARY LANDFILL CLOSURE – LOS ANGELES COUNTY
DOCUMENT RECORDING**

The City of Los Angeles Bureau of Sanitation (BOS) hereby submits Final Landfill Closure documents for official recording with the Los Angeles County Registrar-Recorder/County Clerk.

In accordance with the California Department of Resources Recycling and Recovery (CalRecycle) 27 CCR 21170 regulation, the attached documents are being presented for recording subsequent to the completion of closure work at Lopez Canyon Sanitary Landfill. Please reference the attached Certification and supporting documentation for all mandated information.

The attachments listed below are included with this submittal:

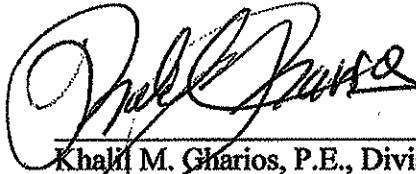
1. *Notice of Closure of Solid Waste Disposal Site* Recording Cover Page.
2. *Title 27 CCR, Section 21170 Compliance Certification*, Khalil Gharios, P.E.
3. *Approval of Final Closure Construction Quality Assurance Reports, Lopez Canyon Sanitary Landfill, Lake View Terrace, California (File No. 69-068, Order No. R4-2004-0176, CI-5636)*, California Regional Water Quality Control Board (CRWQCB)
4. *Lopez Canyon Landfill, City of Los Angeles (19-AA-00820) Acceptance of Partial Final Closure Certification*, Department of Resources Recycling and Recovery (CalRecycle)
5. *Lopez Canyon Landfill (SWFP # 19-AA-0820) Transmittal of Official SWFP Closure Permit*, City of Los Angeles, LEA Program Supervisor



6. *Solid Waste Facility Permit (19-AA-0820)*, City of Los Angeles Bureau of Sanitation
7. *Lopez Canyon Landfill As-Built Topographic Map (Drawing No. A-01)*, City of Los Angeles, Solid Resources Processing and Construction Division (SRPCD)
8. *Lopez Canyon Sanitary Landfill Deliniated Disposal Areas (Drawing No. A-02)*, City of Los Angeles, Solid Resources Processing and Construction Division (SRPCD)

If you have any questions please contact John Hamilton by phone at (213) 847-2700 or by email at john.cobb.hamilton@lacity.org.

On Behalf of the City of Los Angeles,



Khalil M. Gharios, P.E., Division Manager
Solid Resources Processing and Construction Division

Cc: Jonathan Zari, BOS; John Hamilton, BOS



Matthew Rodriguez
Secretary for
Environmental Protection

California Regional Water Quality Control Board Los Angeles Region

320 W. 4th Street, Suite 200, Los Angeles, California 90013
(213) 576-6600 • FAX (213) 576-6640
<http://www.waterboards.ca.gov/losangeles>



Edmund G. Brown Jr.
Governor

October 31, 2011

Khalil M. Gharios, Division Manager
Solid Resources Processing and Construction Division
City of Los Angeles Bureau of Sanitation
1149 S. Broadway, 8th Floor
Los Angeles, CA 90015

APPROVAL OF FINAL CLOSURE CONSTRUCTION QUALITY ASSURANCE REPORTS - LOPEZ CANYON SANITARY LANDFILL, LAKE VIEW TERRACE, CALIFORNIA (FILE NO. 69-068, ORDER NO. R4-2004-0176, CI-5636)

Dear Mr. Gharios:

The California Regional Water Quality Control Board, Los Angeles Region (Regional Board), has received from the City of Los Angeles, Bureau of Sanitation (BOS), a *Certification of Final Closure Report* (Certification Report) for the Lopez Canyon Sanitary Landfill (Landfill) in Lake View Terrace, California. The Certification Report was submitted to the Regional Board on July 20, 2011, along with the following construction quality assurance (CQA) reports:

- *Existing Cover Performance Analysis and Construction Quality Assurance Report for Disposal Area C, Lopez Canyon Sanitary Landfill, Lake View Terrace, California*, dated April 12, 2011 (A supplement to this document was submitted to the Regional Board on October 17, 2011);
- *Construction Quality Assurance Report, Final Cover Construction, Deck of Disposal Area B, Lopez Canyon Sanitary Landfill, Lake View Terrace, California*, dated June 16, 2011; and
- *Construction Quality Assurance Report, Final Cover Construction, Slope of Disposal Area AB+, Lopez Canyon Sanitary Landfill, Lake View Terrace, California*, originally submitted to the Regional Board on November 8, 2010, revised January 2011.

Previously, the Regional Board also received the following CQA reports prepared for the Landfill:

- *Construction Quality Assurance Report, Final Cover Construction, Deck of Disposal Area A, Lopez Canyon Sanitary Landfill, Lake View Terrace, California*, dated June 28, 2010 and submitted to the Regional Board on August 4, 2010;
- *Construction Quality Assurance Report, Final Cover Construction, Slopes and Benches of Disposal Area A, Lopez Canyon Sanitary Landfill, Lake View Terrace, California*, dated August 2004 and submitted to the Regional Board on November 5, 2004;
- *Construction Quality Assurance Report, Final Cover Construction, Disposal Area AB+ Deck, Lopez Canyon Sanitary Landfill, Lake View Terrace, California, Volume 1 and 2*, dated August 2004 and submitted to the Regional Board on November 5, 2004; and

California Environmental Protection Agency



Mr. Khalil Gharios
Lopez Canyon Sanitary Landfill

- 2 -

October 31, 2011

- *Construction Quality Assurance Report, Final Cover Construction, Disposal Area B, Lopez Canyon Sanitary Landfill, Lake View Terrace, California, Volumes 1-3, dated August 2000 and submitted to the Regional Board on November 2, 2000.*

The Landfill is a Class III municipal solid waste management facility that was operated by BOS from October 1975 to July 1996. Final closure of the Landfill started in 1996, intermittently suspended due to various causes, and completed in February 2011. The 166-acre disposal area of the Landfill is divided into four sub-areas known as Disposal Areas A, B, AB+, and C. Each disposal area has a slope area and a deck area that were closed individually. Except for Disposal Area B, which has been closed with a prescriptive final cover system required in section 21090(a) of California Code of Regulations, Title 27 (27 CCR), all other areas of the Landfill have been closed with an engineered alternative final cover system, as allowed in section 20080(b) of 27 CCR, that consists a monolithic soil layer of at least five feet thick. The CQA reports have been submitted to the Regional Board to meet the requirements in Regional Board Order No. R4-2004-0176, which includes waste discharge requirements (WDRs) for closure and post-closure maintenance, and relevant requirements of 27 CCR.

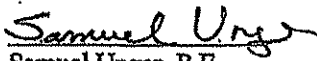
We have reviewed the CQA reports. Based on the information provided and our observations during inspections though out the years while final closure activities were carried out, we have determined that construction of the final cover system of the Landfill meets relevant requirements of the WDRs and 27 CCR. The CQA reports are therefore approved.

The Certification Report indicates that an As-Built Closure Cost Report will be submitted as a separate report and that an amendment to the Certification Report will be submitted commensurate with the completion of the hydro-seeding in Disposal Area C at the Landfill. Region Board staff will wait until such supplemental documents are submitted and reviewed before considering approval of the Certification Report.

In accordance with section 21880 of 27 CCR, the Certification Report is also subject to the approval of the City of Los Angeles Department of Building and Safety Local Enforcement Agency (LEA) and the California Department of Resources Recycling and Recovery (CalRecycle). The Landfill will be considered formally closed and in post-closure maintenance once the Certification Report is approved by all regulatory agencies.

If you have any questions, please contact Mr. Douglas Cross, Project Manager, at (213) 620-2246 or Dr. Wen Yang, Chief of the Land Disposal Unit, at (213) 620-2253.

Sincerely,


Samuel Unger, P.E.
Executive Officer

cc: Leslie Graves, State Water Resources Control Board
Scott Walker, Engineering Support Branch, CalRecycle
David Thompson, Department of Building and Safety, City of Los Angeles (LEA)
Jeff Dobrowolsk, Geosyntec Consultants, Huntington Beach

California Environmental Protection Agency



DEPARTMENT OF RESOURCES RECYCLING AND RECOVERY

801 K STREET, MS 19-01, SACRAMENTO, CALIFORNIA 95814 • (916) 322-4027 • WWW.CALRECYCLE.CA.GOV

August 8, 2011

Mr. Khalil Gharios, Division Manager
Bureau of Sanitation, City of Los Angeles
1149 South Broadway, Suite 800
Los Angeles, California 90015

LOPEZ CANYON LANDFILL, CITY OF LOS ANGELES (19-AA-00820)
ACCEPTANCE OF PARTIAL FINAL CLOSURE CERTIFICATION

Dear Mr. Gharios:

Engineering Support Branch (ESB) Closure and Facility Engineering Unit (Closure) staff have reviewed (received on July 20, 2011) the Partial Closure Certification Report (Report) for the Lopez Canyon Sanitary Landfill (LCSL). The documents reviewed were:

- *Construction Quality Assurance, Final Cover Construction Deck of Disposal Area B, Lopez Canyon Sanitary Landfill (LCSL), Lake View Terrace, California; dated June 2011; prepared by Geosyntec Consultants for the City of Los Angeles Bureau of Sanitation.*
- *Construction Quality Assurance, Final Cover Construction for the Slopes of Disposal Area AB+, Lopez Canyon Sanitary Landfill (LCSL), Lake View Terrace, California; dated October 2010, revised January 2011; prepared by Geosyntec Consultants for the City of Los Angeles Bureau of Sanitation.*
- *Existing Cover Performance Analysis and Construction Quality Assurance Report for Disposal Area C, Lopez Canyon Sanitary Landfill (LCSL), Lake View Terrace, California; dated October 2010, revised January 2011; prepared by Geosyntec Consultants for the City of Los Angeles Bureau of Sanitation.*
- *Certification of Final Closure Report, Lopez Canyon Sanitary Landfill; dated July 11, 2011; prepared by the City of Los Angeles Bureau of Sanitation.*

The LCSL is a class III disposal facility, located in Lakeview Terrace, City of Los Angeles. The facility occupies 399 acres of which 166 acres had been used for waste disposal. The LCSL ceased receiving waste in 1996 and its closure was finalized in 2010. The facility remains under the ownership of City of Los Angeles and its postclosure land use has been identified as open, unoccupied, and non-irrigated space.

Closure construction documentation for the slopes of Area B, AB+ deck, and Area A slopes and deck was previously submitted and accepted by the predecessor of CalRecycle, California Integrated Waste Management Board.

The documentation included in this Report along with the certifications submitted in the past complete closure activities at the LCSL (construction of the final landfill cover, installation of environmental monitoring systems and revegetation), with the exception of: (1) revegetation of Disposal Area C, (2) recordation of the site with the County Recorder (27 CCR 21170), and (3) as-built closure cost summary (27 CCR 21880[a][1]).



The City of Los Angeles Bureau of Sanitation, as operator of the landfill, has acknowledged that the outstanding items shall be submitted to CalRecycle later this year.

ESB staff finds that the submitted Report meets the requirements set forth in Title 27, California Code of Regulations (27 CCR), Section 21880.

ESB staff understands that the Los Angeles Regional Water Quality Control Board (RWQCB) and the City of Los Angeles Environmental Health Department, acting as the Solid Waste Local Enforcement Agency (LEA), are still reviewing the Report.

Should revisions to the Report be required by RWQCB or LEA, ESB staff reserves our authority to further review and recommend approval or rejection of such revisions.

Therefore, pending any subsequent revisions, ESB staff accepts the Report.

Once the remaining items mentioned above are submitted and all regulatory agencies accept the Report and the remaining submittals, the Lopez Canyon Sanitary Landfill may be considered formally closed and in postclosure maintenance.

The acceptance of this document is an acknowledgement that a California Professional Engineer/Certified Engineering Geologist, contracted by operator, has monitored the construction and certified that the closure actions have been constructed to the original specifications.


Upon formal acceptance of the closure certification, ESB staff requests that an electronic version (PDF Format) is submitted in addition to the already submitted paper hard copy of the documentation. The electronic version should include all drawings and maps corresponding to the hard copy version.

Correspondence concerning the above matter should be sent to CalRecycle at: P.O. Box 4025, Mail Stop 10A-18, Sacramento, CA 95812-4025 (U.S. Postal Service) or 1000 I Street, M.S. 10A-18, Sacramento, CA 95814-2828 (non-USPS).


Should you have any questions or comments concerning the above matter, please contact Peter Jan or Michael Wochnick of my staff at (916) 341-6315 or (916) 341-6289, respectively. Alternatively, Closure staff may be reached by email at peter.jan@calrecycle.ca.gov or michael.wochnick@calrecycle.ca.gov.

Sincerely,



 Scott Walker, P.E., C.E.G., Manager
Engineering Support Branch

cc: Jeff Dobrowolski, Geosyntec Consultants, 2100 Main Street, Ste. 150, Huntington Beach, CA 92648
Wen Yang, Los Angeles Regional Water Quality Control Board
David Thompson, City of Los Angeles, Department of Building and Safety (LEA)
Diane Ohiosumua, CalRecycle, Permits and Assistance South Section

SOLID WASTE FACILITY PERMIT		Facility Permit Number: 19-AA-0820	
1. Name and Street Address of Facility: Lopez Canyon Landfill 11950 Lopez Canyon Road Lake View Terrace, CA 91342	2. Name and Mailing Address of Operator: City of Los Angeles Bureau of Sanitation Solid Resources Processing & Construction Division 11950 Lopez Canyon Road, Lake View Terrace, CA 91342	3. Name and Mailing Address of Owner: City of Los Angeles Bureau of Sanitation 1149 South Broadway Street, Suite 800 Los Angeles, CA 90015	
4. Specifications: a. Permitted Operations: <input checked="" type="checkbox"/> Closed Solid Waste Disposal Site b. Permitted Area (in acres): Disposal Area: <u>90 acres</u> Total Area: <u>90 acres</u>			
VALID PERMIT VALID PERMIT			
The attached permit findings and conditions are integral parts of this permit and supersede the conditions of any previously issued solid waste facility permit.			
5. Approval: <div style="text-align: center;">  _____ Approving Officer Signature Detrich B. Allen, General Manager Name/Title </div>		6. Local Enforcement Agency Name and Address: City of Los Angeles Environmental Affairs Department 200 North Spring Street Suite 1905, Mail Stop 248 Los Angeles, California 90012	
7. Permit Issued Date: May 19, 2009	8. Permit Review Date: May 19, 2014	9. Owner/Operator Transfer Date:	
10. Legal Description of Facility: Section 6 – Township 2 North, Range 14, Section 31 – Township 3 North, Range 14 West, and Section 1 – Township 2 North, Range 15 West of the San Bernardino Meridian, Los Angeles County, California.			
11. Findings: a. This permit is consistent with the standards adopted by the California Integrated Waste Management Board. b. The closure and postclosure maintenance of the disposal site is consistent with the State Minimum Standards for Solid Waste Handling and Disposal as determined by the Local Enforcement Agency. c. A Mitigated Negative Declaration was filed with the State Clearinghouse (SCH#97051017) and certified by the City of Los Angeles, Bureau of Sanitation on January 5, 1999.			
12. Prohibitions: Disposal of solid waste at this site is prohibited.			
13. The following documents describe and/or restrict the closure and postclosure maintenance of this site:			
Final Closure and Postclosure Maintenance Plan (Volumes I through III)	April 1993	Waste Discharge Requirements Order No. R4-2004-0176, CI-5636	Adopted: December 2004 Revised: December 2008
Final Closure and Postclosure Maintenance Plan (Volumes IV)	February 1994	Revision II to Volume IV of IV	October 1998
Replacement Amendment of Volume IV of IV	June 1996	Revision III to Volume IV of IV	October 2002
Revision I to Volume IV of IV	March 1997	Revision IV to Volume IV of IV	July 2008
14. Self Monitoring: The owner/operator shall submit the results of all self-monitoring programs to the Local Enforcement Agency in accordance with the most recently approved postclosure maintenance plan. While the operator is implementing the landfill's closure plan, they will be required to submit quarterly status reports on construction activities and timelines. The quarterly status reports are to be submitted within 30 days			

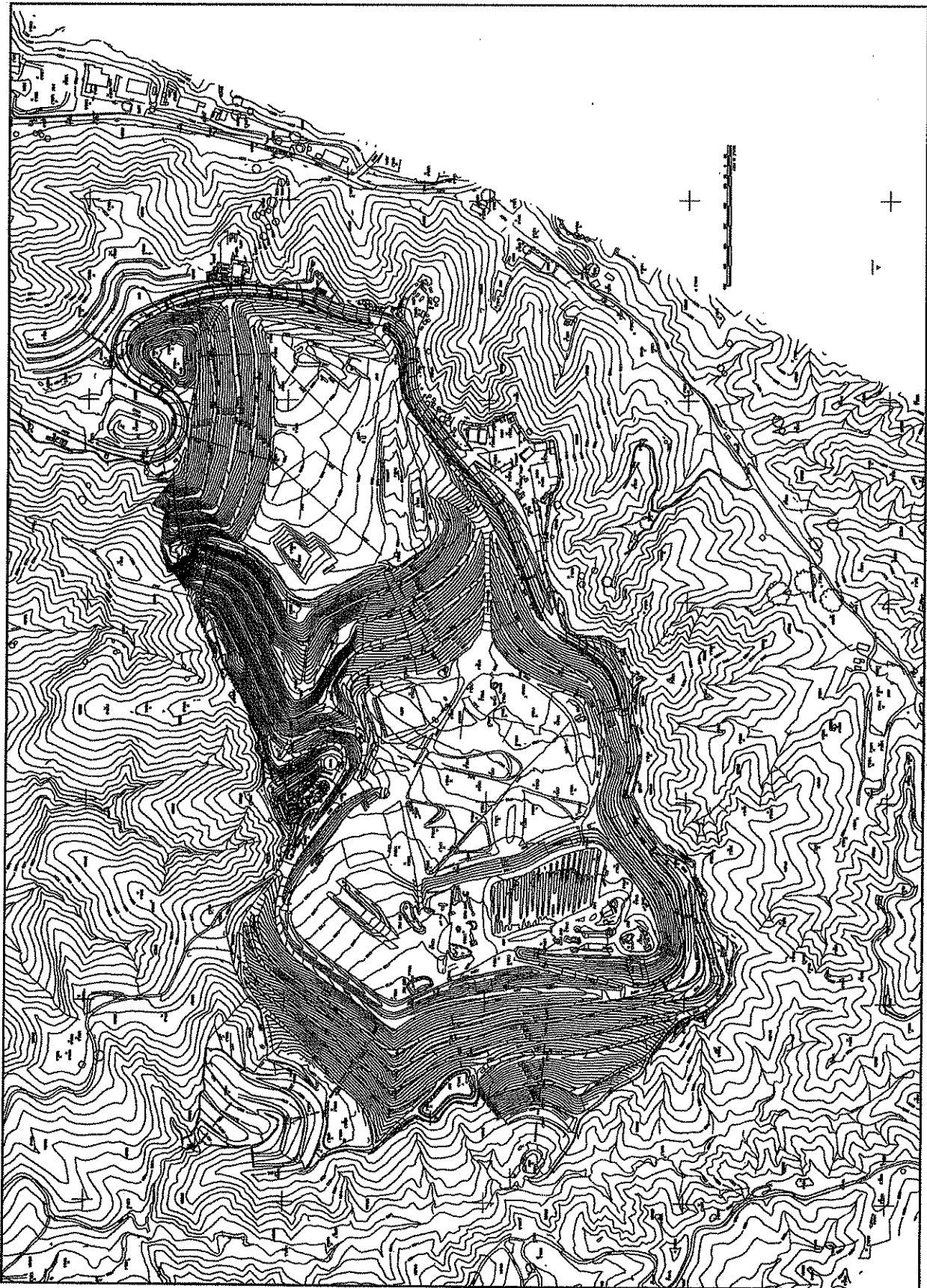
SOLID WASTE FACILITY PERMIT

Facility Permit Number: 19-AA-0820

15. LEA Conditions:

- a. The owner/operator shall comply with all applicable standards as specified in Title 27, California Code of Regulations (27 CCR) including all appropriate financial assurance requirements.
- b. Additional information concerning the disposal site shall be furnished upon request within the time frame specified by the LEA.
- c. The owner/operator shall comply with the most recently approved Closure Plan and most recently approved Postclosure Plan
- d. All proposed changes, including postclosure land uses, that would cause the design or maintenance of the disposal site to be modified shall be documented in a revised closure and/or postclosure maintenance plans and may only be implemented upon the approval of the revised plan(s).
- e. The LEA shall be notified of a change in ownership during closure or postclosure maintenance in accordance with 27 CCR 21200.
- f. The landfill closure activities as described in the approved Closure Plan are to be completed by December 31, 2012.

VALID PERMIT



CITY OF LOS ANGELES SANITATION PUBLIC WORKS SOLID WASTE RECYCLING PROCESSING AND CONSTRUCTION DIVISION 11950 LOPEZ CANYON ROAD LAKE VIEW TERRACE, CA 91342	DATE: _____ AS-PROPOSED	SHEET OF SHEETS A-01
	LOPEZ CANYON LANDFILL AS-BUILT TOPOGRAPHIC MAP 11950 LOPEZ CANYON ROAD LAKE VIEW TERRACE, CA 91342	LOPEZ CANYON CANYON TOPO 2011 DRAWING NO.



**SOLD
RESOURCES
PROCESSING
AND
CONSTRUCTION
DIVISION.**

BUREAU OF SANITATION
5TH FLOOR
1149 S. BROADWAY #7,
LOS ANGELES, CA 90015

[illegible]

APPROVED

LOPEZ CANYON SANITARY
LANDFILL
DELINATED DISPOSAL AREAS
11850 LOPEZ CANYON ROAD
LAKE VIEW TERRACE, CA 91362

DATE	10 MAY
TIME	
LOCATION	
RECORD	
NAME	
SALE	
RENT TIRE	

**DISPOSAL
AREAS**

DRAWING No.

A-02

DAY OF CHINESE

