

YES



- Brown paper bags
- Cans/Metal, aluminum, steel & tin
- Cardboard (*flattened and put next to the bin*)
- Cereal boxes
- Colored paper
- Glass bottles & containers
- Magazines
- Metal coat hangers
- Mixed paper
- Newspaper
- Office paper
- Plastic containers
- Plastic grocery bags
- Unwanted mail

For a complete list of accepted items visit our website www.larecycles.org

HOW TO RECYCLE

- Please rinse all cans, bottles and plastics before recycling. Crush aluminum cans to save space in the bin.
- Put recyclable items into the blue recycling bin or store them in a bag or container. Do not tie or close the bag.
- Empty the container or bag into the blue recycling bin. Reuse the bag or container or recycle it, if it's recyclable.

THAT'S IT! IT'S EASY!



Call us at 800-773-2489 or 3-1-1
Or go online and visit our website at

www.larecycles.org

The U.S. Environmental Protection Agency (EPA) has a fun online interactive and educational game called RecycleCity where you can be the City Manager!

www.epa.gov/recyclecity

The California Integrated Waste Management Board (CIWMB) offers a variety of resources for all ages!

www.ciwmb.ca.gov



City of Los Angeles
Department of Public Works
Bureau of Sanitation

As a covered entity under Title II of the Americans with Disabilities Act, the City of Los Angeles does not discriminate on the basis of disability and, upon request, will provide reasonable accommodation to ensure equal access to its programs, services, and activities.



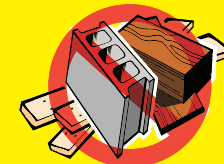
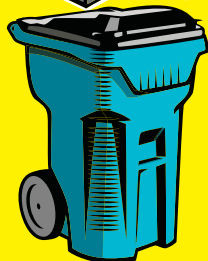
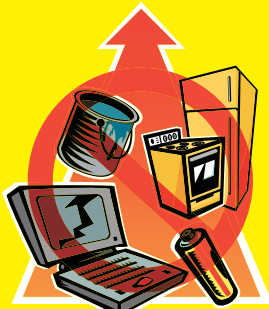
RECYCLING CAN BE FUN!



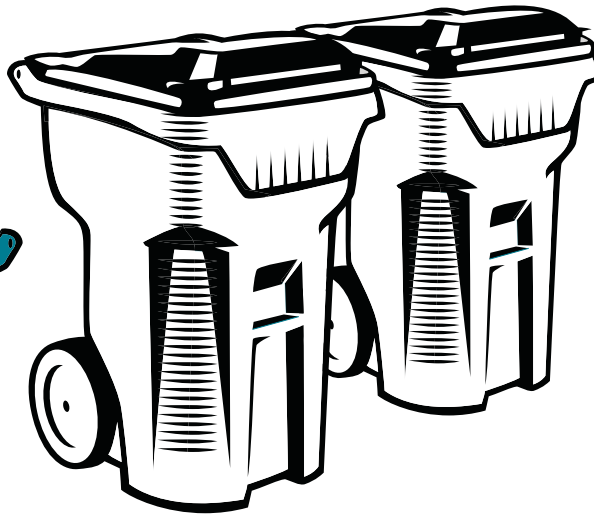
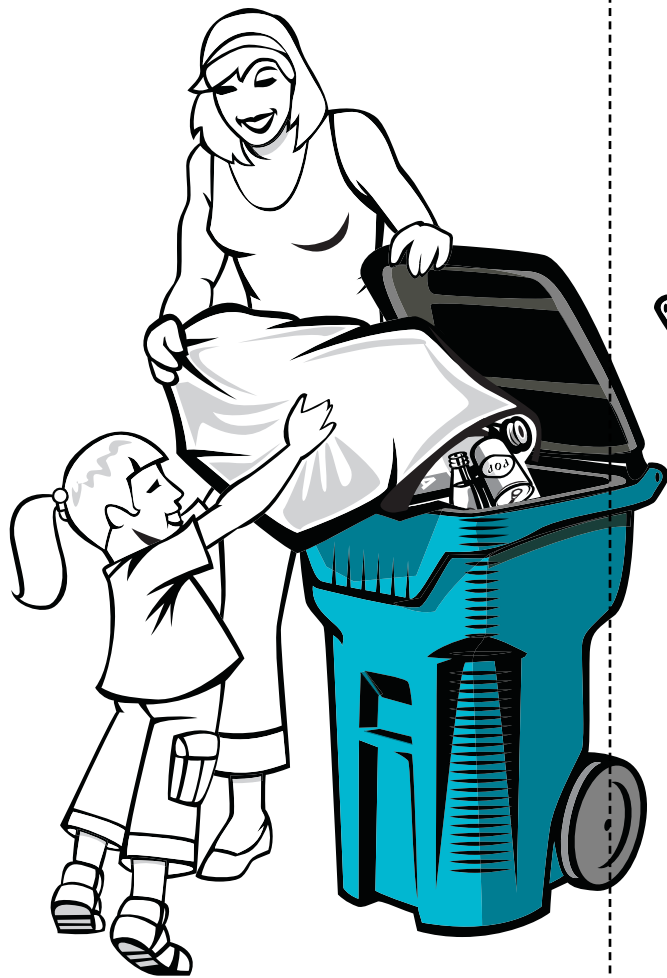
City of Los Angeles
Department of Public Works
Bureau of Sanitation

- Anti-freeze
- Appliances & electronics
- Batteries
- Broken glass
- Ceramic mugs
- Cleaning products
- Clothing
- Construction debris
- Food-soiled paper (*eg. pizza boxes*)
- Food waste
- Furniture
- Gardening pots
- Glass mirrors
- Light bulbs
- Medical waste (*eg. syringes, bandages, tissues, cotton-swabs*)
- Motor oil
- Paint
- Pressurized cans
- Trash
- Waxed cardboard & paper (*eg. milk cartons*)
- Yard trimmings

NO



MULTI-FAMILY RESIDENTIAL RECYCLING PROGRAM



Color the drawing using your favorite colors. Be sure to use blue for the recycling bins.

WHAT IS RECYCLING?

“Recycling” refers to a series of activities where discarded materials are collected, sorted, processed and converted in to reusable raw materials.

If you throw cans, bottles and paper in to the trash can they will go to the landfill and never be used again. What a waste! We are running out of room for all of our trash and polluting our earth in the process!

Plastic bottles that are recycled can be used to make carpet, hats, scarves and plastic lumber for building. Recycled paper and boxes can be used to make insulation, containers and more paper!

DID YOU KNOW!

One person generates 2.4 pounds of garbage each day and more than half of it could be recycled?

The energy saved from recycling 1 aluminum can could operate a computer or T.V. for 3 hours and recycling 1 glass bottle saves enough to power a 400-watt light bulb for 4 hours!

A six-pack of recycled aluminum cans saves enough energy to drive a car 5 miles.

A one year supply of newspapers for your family could be recycled and used to insulate a whole house!

Every year more than 900 million trees are cut down to provide raw materials for American paper and pulp mills.

And, for every ton of paper recycled, 17 trees, 7,000 gallons of water, 4,100 kw hours of electricity, and 390 gallons of oil are saved!

REMEMBER TO RECYCLE AND TELL YOUR FRIENDS AND FAMILY HOW THEY CAN TOO!