

Proper Disposal Methods:

To stop sewage backups and overflows, you need to keep fats, oils and grease (FOG) out of the sewer system. The most effective solution is to control FOG waste at the source. Here's how:

1. Implement these Best Management Practices:

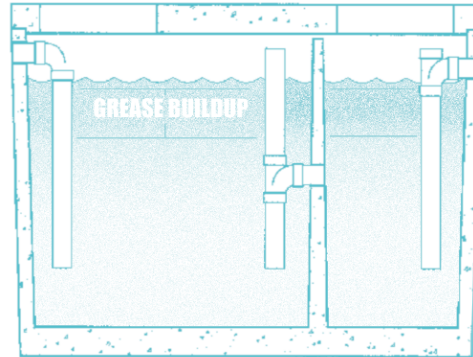
- Scrape or “dry wipe” food scraps from trays, plates, pots, pans, utensils, and grills (or other cooking surfaces) into the trash prior to washing.
- Use absorbents, or other materials such as towels, to pick up spills before mopping the floor.
- Use baskets or strainers in sink drains to catch food scraps and other solids — and dispose it into the trash. Garbage grinders are prohibited, and existing grinders must be removed

Don't pour FOG down kitchen sinks, floor drains or toilets.

Instead, properly store *then* **recycle** FOG waste.



- Do not use chemicals and additives (including soaps and detergents) that claim to dissolve grease. Some simply pass grease down pipes where it can clog sewer lines in another area.
2. **Install a grease interceptor** that's sized and manufactured to handle the amount of FOG waste.
 3. **Maintain your grease interceptor in proper operating condition** by having it cleaned and serviced on a frequent basis.



Configuration of a typical grease interceptor

For information about grease interceptors, installation and sizing requirements, call the City of Los Angeles' **Industrial Waste Management Division** at **(323) 342-6118**.

Fact sheets are available on:

- Best Management Practices
- When is a Grease Interceptor Required?
- Information on Building a Grease Interceptor
- Sizing Criteria; Technical Assistance to Licensed Plumbers and Contractors
- Recycling, Disposal and Hauling Information

Report all spills and other sewer problems to the City of Los Angeles' **Wastewater Collection Systems Division** at:

(213) 485-7575 between 6:30AM and 1:00AM.

(310) 823-5507 outside of the above hours.



Industrial Waste Management Division
2714 Media Center Drive
Los Angeles, CA 90065

FOOD SERVICE ESTABLISHMENTS

BEST MANAGEMENT PRACTICES for



Eliminating Fats Oils and Grease (F.O.G.)

From Our
SEWERS

Help Keep the
Environment Clean!

Fats, Oils and Grease CLOG THE SEWERS!



Sewage backups and overflows are typically the result of grease buildup which can cause property damage, environmental problems and other health hazards.

Fats, oil and grease (FOG) get into the sewers mainly from commercial food service establishments that do not have adequate grease control measures in place such as *Best Management Practices* or grease interceptor equipment.

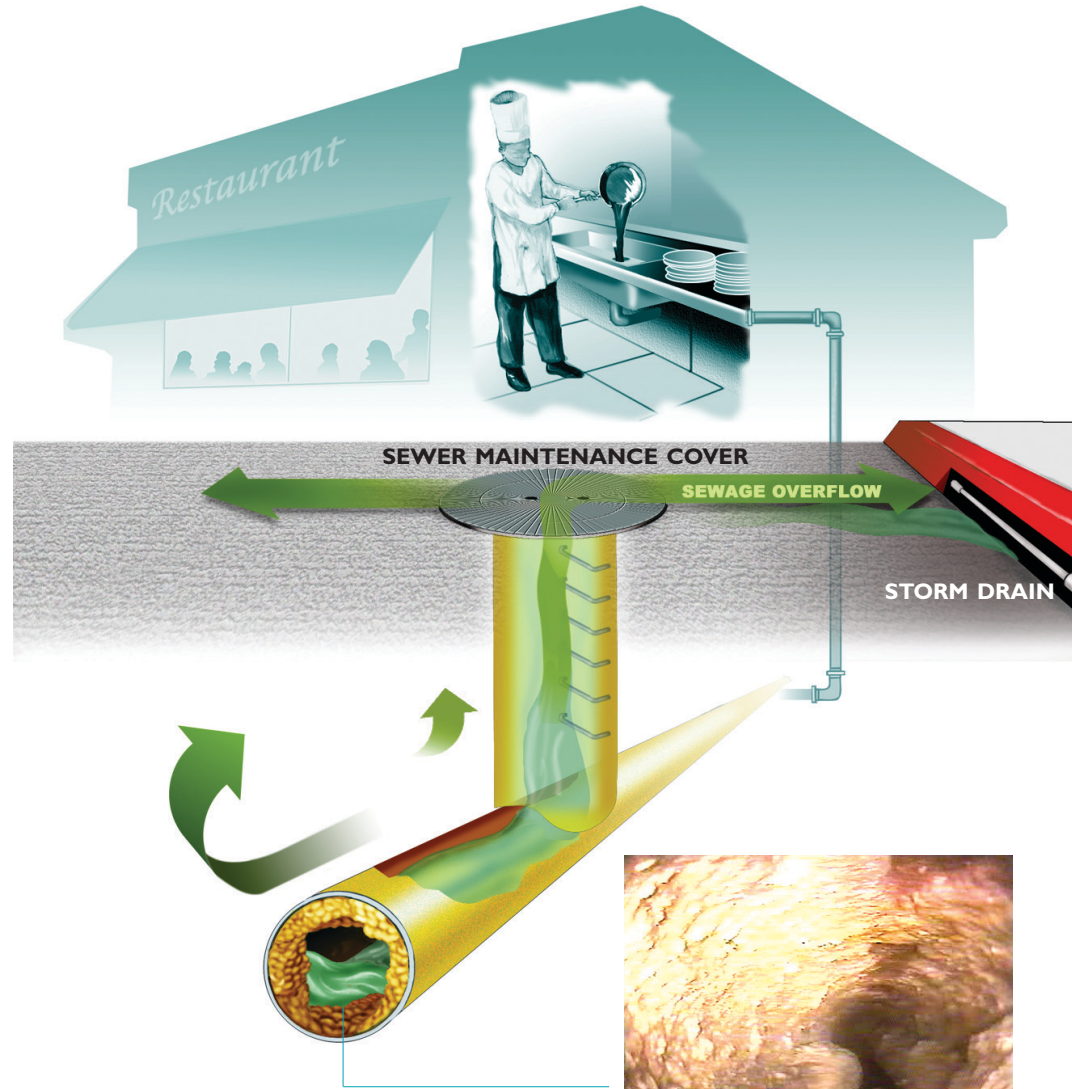
Waste FOG is generated when a food service establishment is using food sources and materials such as:

- Beef
- Pork
- Poultry
- Seafood
- Fats
- Tallow
- Oil
- Lard
- Butter
- Shortening
- Grease
- Margarine

When waste FOG is washed into the plumbing system, (usually through kitchen sinks and floor drains found in food preparation areas) it sticks to the insides of sewer pipes both on your property and in the streets.

Over time, waste FOG builds up and eventually **blocks the entire pipe** causing sewage backups and overflows.

From Sinks...



...to Sewers



Photo taken via remote controlled camera showing FOG buildup in sewer pipe interior.

COSTS:

To Your Business:

As your sewer pipes back up, sewage and food particles that accumulate can attract insects and other vermin and may create potential health hazards.



Property damage can result from sewage backups leading to expensive cleanup and plumbing repairs that may have to be paid for by you.

Health code violations or closures can greatly impact your business operations.



To the Environment:

SEWAGE OVERFLOW



Clogged sewers can lead to overflows. As sewage overflows onto streets, it enters the storm drain system...

...where the sewage is then carried to our local beaches, creating a health risk for swimmers, marine life—and causing beach closures.



CONTAMINATED BEACHES

To the City:



Increased sewer blockages and overflows lead to excessive and costly maintenance and can result in severe fines from the regulatory agencies.

This can increase your sewer fees.